



# Voice recorder “Ideal”

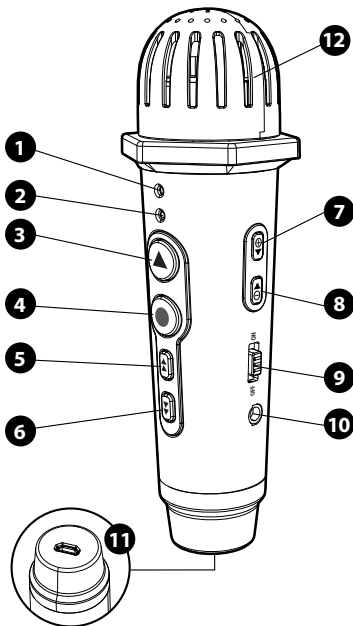
manual



Manual | Manuel



**Art. 62623**



## Quick guide

The “Ideal” voice recorder enables voice recordings up to a maximum of 2 hours with a storage capacity of 128 MB.

By pressing the on button **9**, these can be put together in any desired partial sequences/tracks and can be extended up to the maximum recording time. Access to different tracks is enabled using the fast-forward, rewind and play buttons **5 6 3**. The fast-forward/rewind/play functionality **5 6 3** also allows the deletion or partial deletion of recordings. Other buttons allow you to control the volume **7 8**, playback **3** and recording **4** and to pause texts. LEDs **1 2** indicate the current device status to the user. Headphones can be connected via a separate socket **10**. A USB connection **11** allows recordings to be transferred to external devices to be backed up. This connection is also how the built-in battery is recharged.

- |                                |                           |
|--------------------------------|---------------------------|
| ❶ Status LED red               | ❷ Louder                  |
| ❷ Status LED green             | ❸ Softer                  |
| ❸ Play / playback / pause      | ❹ On / off switch         |
| ❹ Record / delete              | ❺ 3.5 mm headphone socket |
| ❺ Fast-forward / next track    | ❻ Mini USB socket         |
| ❻ Fast-rewind / previous track | ❼ Microphone              |

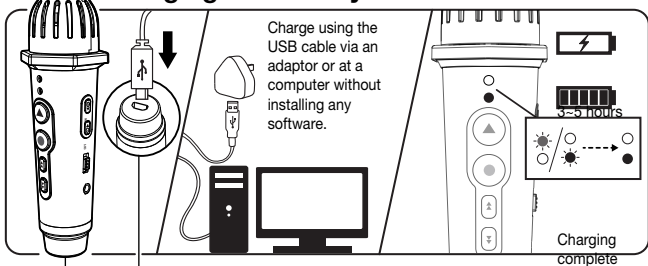
## Aufnehmen und abspielen

1. Switch the voice recorder on by pressing the on/off switch ❹. Once it is turned on, the red and green LEDs will light up ❶ ❷. The device is now in standby mode.
2. Hold the record button ❹ down for 2 seconds. The green LED ❷ will turn off. The device is now in record mode.
3. Hold the microphone roughly 15 - 30 cm away from your mouth. The recording must be longer than 2 seconds, otherwise the device will not record anything.
4. You can pause the recording by pressing the record button ❹ again. The green LED ❷ starts flashing. The device is in pause mode. Press the record button again to continue recording.
5. To end the recording, press the record button ❹ again for 2 seconds. The green and red LEDs ❶ ❷ will both be illuminated. The device is now in standby mode again.

6. Press the play button **3** to play back the recorded material. The green LED **2** starts to shine. The device is in playback mode.
7. Once the recording has finished playing, the device will automatically go back into standby mode. The green and red LEDs **1 2** will both light up.

## Features:

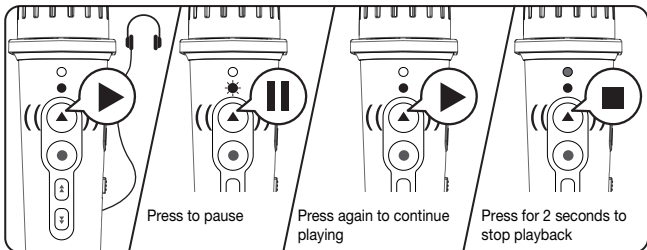
### Charging the battery



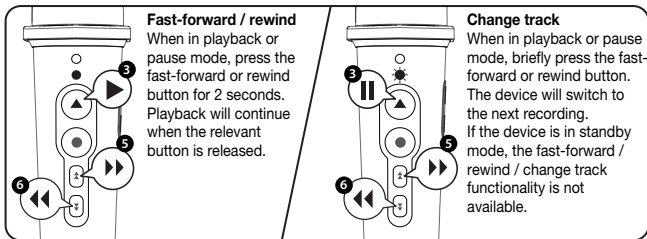
The voice recorder can be connected using the USB cable provided, allowing it to be charged via a computer. Alternatively, this can be done by connecting it via an adaptor (not included in scope of delivery) to the mains network. The device takes 3 to 5 hours to charge. While the device is still charging, the red and green LEDs **1 2** will light up alternately. At the end of the charging process, the red LED **1** will turn off and the green LED **2** will be permanently illuminated.



## Pausing and stopping a recording



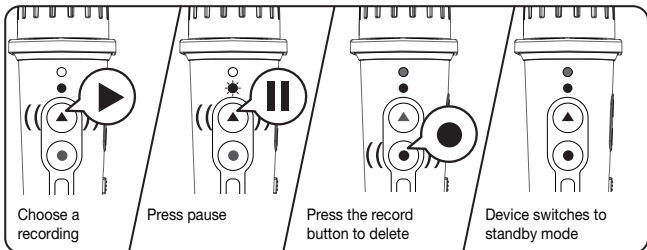
## Fast-forward / rewind / change track



You can fast-forward or rewind within a recording both in playback mode (green LED **2** permanently illuminated) and in pause mode (green LED **2** flashing). To do this, press the fast-forward or rewind button **5** **6** for at least two seconds.

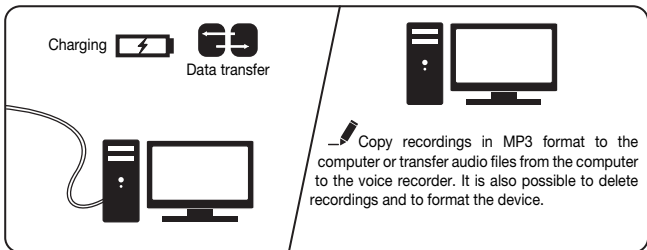
The fast-forward or rewind buttons **5** **6** can also be used to switch between recordings. If the device is in pause mode (green LED **2** flashing), you can jump back and forth between separate recordings.

## Deleting a recording



Select a recording in playback mode (green LED ❷ permanently illuminated). Press the play button ❸ to enable pause mode (green LED ❷ flashing). Now press the record button ❹ to delete the recording. Afterwards, the device will automatically switch to standby mode. If the red LED ❶ flashes during a recording, this means the voice recorder's storage capacity is full. You will need to delete recordings before recording anything new.

## Transferring data to the computer



Recordings can be stored on a computer in MP3

format. To do this, connect the voice recorder to the computer using the USB cable. The data can be transferred via the removable drive now displayed. This also allows you to delete recordings on the voice recorder via the computer.



## LED status indicators:

○ off      ● illuminated      ☼ flashing

|     |   |
|-----|---|
| ●   | red + green LEDs permanently illuminated      |
| ●   | → standby mode                                |
| ○   | green LED permanently illuminated             |
| ●   | → playback mode or fully charged              |
| ○   |   |
| ☼   | green LED flashing → pause mode               |
| ●   |   |
| ○   | red LED permanently illuminated → record mode |
| ☼   |   |
| ○   | red LED flashing → memory is full             |
| */% | red + green LEDs lighting up alternately      |
| */☼ | → charging in progress                        |
| ☼   |   |
| ☼   | red + green LEDs flashing → low battery level |

## Troubleshooting

If any problems are encountered, please check the following:

**Problem:** The status LED appears to be flashing randomly.

**Solution:** The battery is low. Charge the battery.

**Problem:** LED flashing red while recording.

**Solution:** Memory is full. Delete some of the recordings.

**Problem:** Status LED is not illuminated.

**Solution:** Completely discharge the battery. Charge the battery.

## Battery disposal

You may have purchased an item that contains batteries/rechargeable batteries (hereafter referred to as "[used] batteries"). Because of this, we are legally obliged to provide you with the following information: Batteries must not be disposed of in household waste. As the end user, you are legally obliged to take used batteries to a suitable collection point. You can hand in your used batteries at public collection points in your local area or wherever batteries of the relevant type are sold. You can also return or send back your used batteries free of charge to our dispatch warehouse (see below). If you wish to make use of this option, please send your batteries to the following address, enclosing a note that reads "used":

**TimeTEX HERMEDIA Verlag GmbH**

**Ländenstraße 10 · 93339 Riedenburg · Germany**

**TimeTEX HERMEDIA Verlag GmbH**

**Deggendorfstr. 5 · 4030 Linz · Austria**

**TimeTEX HERMEDIA Verlag GmbH**

**Stemmerstr. 54 · 8238 Bisingen · Switzerland**

Please note that we are only obliged to accept returns of used batteries of the type we sell or have sold within our range and in quantities that are customary for end users.

Waste batteries contain valuable raw materials that can be recycled.

The symbol of the crossed-out dustbin means that batteries and rechargeable batteries must not be disposed of along with household waste.

Pb: Battery contains more than 0.004 percent (by mass) lead

Cd: Battery contains more than 0.002 percent (by mass) cadmium

Hg: Battery contains more than 0.0005 percent (by mass) mercury.



## Disposal of waste electrical equipment

The symbol of the "crossed-out dustbin" means that electrical and electronic equipment must not be disposed of with household waste. These items must be collected separately from unsorted municipal waste and handed in free of charge at a local collection point. Used batteries and accumulators that are not enclosed within the unwanted equipment must be separated from the latter before being handed in at a stationary collection point. You are responsible for destroying any personal data from the waste equipment you wish to dispose of.



**WEEE-Reg.-Nr.: 79696058 | ARA/ERA-Nr.: 40640**

## Technical details

|                    |                        |
|--------------------|------------------------|
| Formats supported: | MP3 / WAV / WMA files  |
| Memory capacity:   | 128 MB SD MicroSD card |
| Recording time:    | approx. 2 hours        |
| Recording quality: | MP3: 128 kbps          |
| Charging time:     | approx. 3-5 hours      |



These instructions and any extracts from them may only be published with the consent of TimeTEX. The technical information is correct at the time of publication and is subject to change without notice.

The latest technical information on your product can be found on our homepage by entering the product item number, which can be found on the packaging or product itself.

**Manual | Manuel:** [www.timetex.com/docs](http://www.timetex.com/docs)

**Keep the instructions for use in a safe place for future reference.**

©TimeTEX HERMEDIA Verlag GmbH · Ländenstraße 10 · 93339 Riedenburg · Germany

TimeTEX AT · Linz | TimeTEX CH · Bisingen | [www.timetex.com](http://www.timetex.com)